



F31 Applicant Biosketch

Guidance & Tips

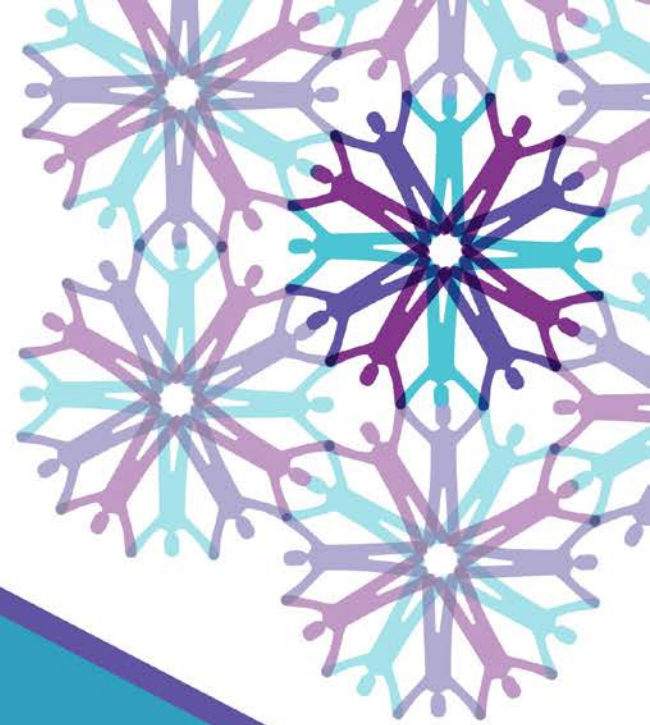
| CENTER TO REDUCE
CANCER HEALTH DISPARITIES

Davyd W. Chung, PhD



Outline

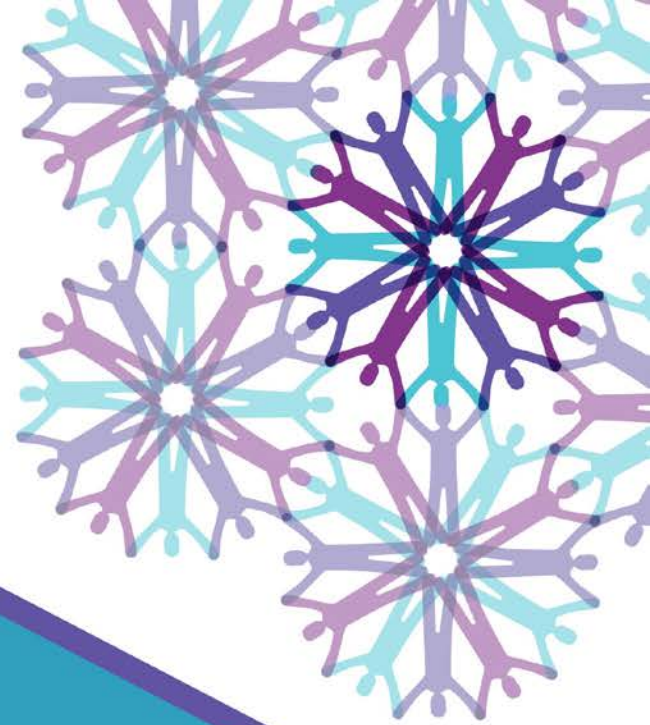
1. *Key Points*
2. *Education Block*
3. *Personal Statement*
4. *Positions and Honors*
5. *Contribution to Science*
6. *Scholastic Performance*
7. *Resources*



Key Points

Key Points on the NIH Biographical Sketch

- The most scrutinized parts of the application are the Specific Aims page, the Abstract, and the PI Biosketch
- Follow the instructions and suggested layout
- Project a confident (but not exaggerated) tone, and do not misrepresent yourself
- Work with your mentor(s) and solicit feedback and **revise, revise, revise!**



Education Block

NIH Biographical Sketch: Education Block

OMB No. 0925-0001 and 0925-0002 (Rev. 10/15 Approved Through 10/31/2018)

BIOGRAPHICAL SKETCH

Provide the following information for the Senior/key personnel and other significant contributors.
Follow this format for each person. DO NOT EXCEED FIVE PAGES.

NAME: ██████████

eRA COMMONS USER NAME (credential, e.g., agency login): ██████████

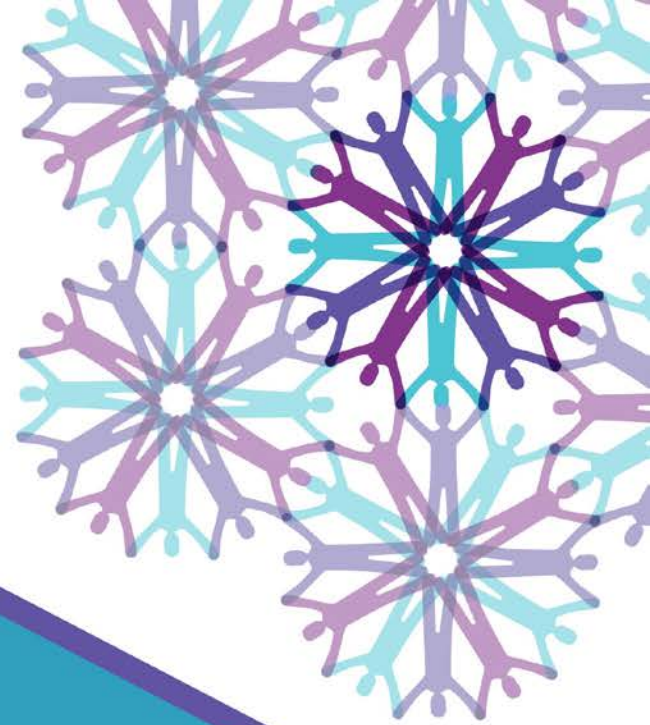
POSITION TITLE: PhD Student

EDUCATION/TRAINING (*Begin with baccalaureate or other initial professional education, such as nursing, include postdoctoral training and residency training if applicable.*)

INSTITUTION AND LOCATION	DEGREE (if applicable)	Completion Date MM/YYYY	FIELD OF STUDY
Baylor University	BS	12/2009	Health Science Studies
Johns University School of Nursing, Baltimore, MD	BSN	08/2012	Nursing
Johns Hopkins University , Baltimore, MD	PhD	05/2020	Nursing

A. Personal Statement

My long term goal is to use rigorous research methodology to generate scientific knowledge, and inform



Personal Statement

NIH Biographical Sketch: Personal Statement

A. Personal Statement

- Briefly describe why you are well-suited for your role in this project.
- Relevant factors may include:
 - Personal/family background
 - Accomplishments in science
 - Previous relevant experimental work and training
 - Career goals based on F31 opportunity
 - Motivation or purpose in pursuing a cancer research career
 - Factors that affected your past productivity if applicable

NIH Biographical Sketch: Personal Statement

- Additional tips and suggestions:
 - Aim for ~300 words for the personal statement
 - Make this section (education block, personal statement, citations) fit within page 1 of the Biosketch
 - Customize for each grant application (F31, K01, R01, etc.)
 - Mention the name of the award you are applying for (F31)
 - Indicate whether you have published or created research products under another name
 - Do not present or expand on material that should be described in other sections of the Biosketch
 - Explain factors that affected your past productivity, such as family care responsibilities, illness, disability, or military service if applicable
 - Market yourself - convey **excitement** and **passion**!

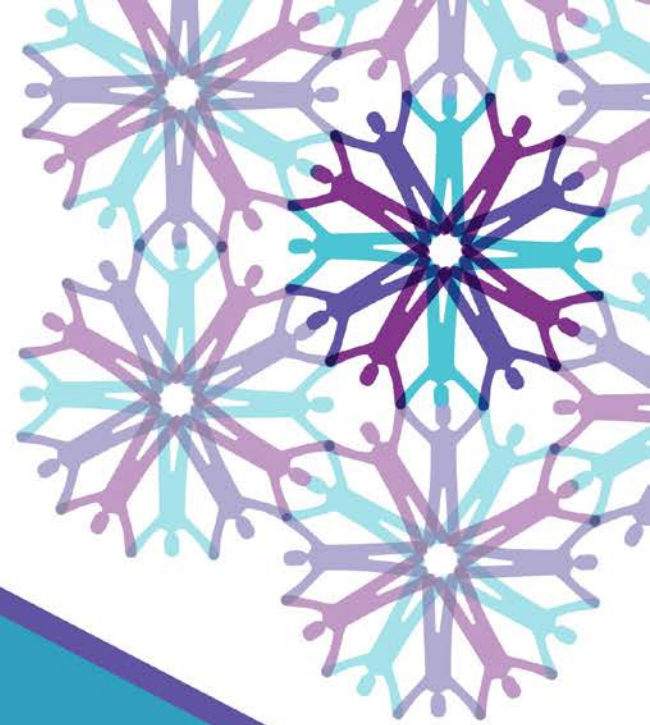
Sample Personal Statement

A. Personal Statement

My long term goal is to use rigorous research methodology to generate scientific knowledge, and inform the development of effective, efficient, and culturally tailored interventions to decrease the burden of disease, and improve the health behaviors of underserved populations.

I migrated to the US when I was 15 years old. Growing up in Ghana, West Africa, I witnessed the debilitating effects that limited access to quality healthcare has on the health outcomes of individuals and their communities. As an immigrant, I experienced the difficulties associated with adapting a new culture. My unique experiences as a first generation African immigrant, and my desire to effect change in the lives of others, has been the driving force behind my educational and career goals. For my undergraduate study, I used my critical thinking skills, academic knowledge and my cultural background as a Ghanaian immigrant to design an experiment for extracting chemical compounds from indigenous herbs used by Ghanaian traditional healers to treat chronic diseases. My study also provided a critical understanding of how traditional healers contribute to the well-being of their communities. My work as an undergraduate intern in Ghana and South Africa also focused on promoting community engagement through outreach programs in underserved communities. Presently, my PhD training focuses on understanding health disparities, and developing the research knowledge and skills to implement effective, interdisciplinary interventions to promote health among underserved populations.

In my career as a medical oncology nurse, I have worked with vulnerable and underserved immigrant populations. Throughout my 3-year clinical experience, I have sought to explore and understand the various psychosocial, cultural and structural factors that influence health and inform health behaviors. My work at an



Positions and Honors

NIH Biographical Sketch: Positions and Honors

- List in chronological order the positions held that are relevant to this application, starting with your present position
- List any relevant academic and professional achievements and honors
- Predoctorates should include scholarships, fellowships, and development awards, as applicable

Sample Positions and Honors

B. Positions and Honors

ACTIVITY/ OCCUPATION	START DATE (MM/YY)	END DATE (MM/YY)	FIELD	INSTITUTION/ COMPANY	SUPERVISOR
Research Coordinator	06/2016	Present	Nursing Research	Johns Hopkins University School of Nursing	[REDACTED] PhD
Abstract Reviewer	05/2016	09/2016	Nursing Research	International Cancer Education Conference	--
Registered Nurse	10/2014	06/2015	Nursing	Fort Belvoir Community Hospital	[REDACTED] FNP, RN, BSN
Registered Nurse	10/2012	10/2015	Nursing	Medstar Washington Hospital Center	[REDACTED], RN, BSN
Research Assistant	11/2014	02/2015	Nursing Research	Johns Hopkins University School of Nursing	[REDACTED] PhD

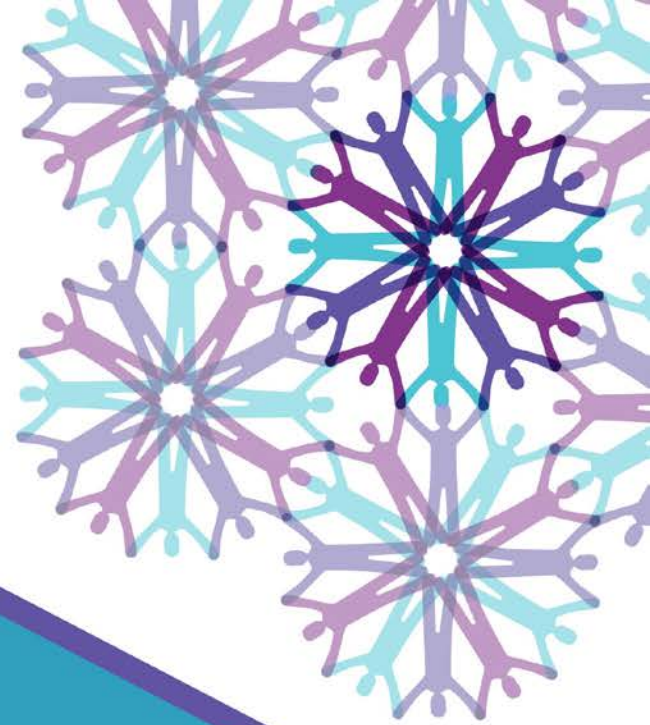
Academic and Professional Honors

2012-Present Daniels Inter-Professional Education Program Scholar, Johns Hopkins University School of Nursing
 2012 Best New Nurse Intervention Award, Medstar Washington Hospital Center
 2011-2012 Robert Wood Johnson New Career in Nursing Scholarship
 2005-2009 Dean's Gold Scholarship, Baylor University

Professional Societies and Organizations

2016 Sigma Theta Tau International Honor Society for Nursing Induction, Nu Beta Chapter

C. Contribution to Science



Contribution to Science

NIH Biographical Sketch: Contribution to Science

- Include two or three of your most significant contributions to science, but can be up to five
 - The description of each contribution should be no longer than one half page, including citations
- These may include:
 - Scientific publications, presentations, community outreach programs, etc.

NIH Biographical Sketch: Contribution to Science

- These contributions do not have to be related to the project proposed in this application. For each contribution, indicate the following:
 - Background that frames the scientific problem
 - Key outcomes and findings
 - Impact of the outcomes and findings on the progress of science or the application to health or technology
 - Your specific role
- For each contribution, you may cite up to four publications or research products that are relevant to the contribution

Sample Contribution to Science

C. Contribution to Science

1. At Johns Hopkins, I have applied my medical oncology clinical experience to exploring and understanding the cervical cancer screening behaviors of underserved populations. As a study coordinator for [REDACTED] [REDACTED] community-based study on health literacy and cervical cancer screening behaviors, I have contributed to the review, clarification and standardization of study protocol through quality checking and data assurance processes. I also provide ongoing feedback and training to research assistants to ensure intervention fidelity and quality data collection. For my dissertation study, I conducted a systematic review of the literature to explore the determinants of cervical cancer screening among African immigrant women. Through this process, I learned about the dearth of methodologically rigorous studies on the determinants of cervical cancer screening behaviors among African immigrant women. In addition, I identified health literacy, the degree to which individuals have the capacity to obtain, process and understand basic health information and services to make appropriate health decisions as a strong predictor of health behavior, including cancer screening. This led to my current dissertation focus.

Presentation

[REDACTED] The determinants of breast and cervical cancer screening behaviors of African immigrant women living in industrialized countries: a critical literature review. International Council on Women's Health Issues; 2016 November; Baltimore, MD, USA.

Sample Contribution to Science

Cont.

2. My research focus is to promote cervical cancer screening to eventually decrease the burden of cervical cancer and reduce cancer disparities among underserved African immigrant women. I currently serve as a member of the African Women's Cancer Awareness Association, an organization that promotes cancer screening among African immigrant women through education and community outreach programs. As a research assistant for a grant funded study to examine the cultural and biological determinants of chronic disease in African immigrants, I served as an interpreter, assisted in adapting research instruments, consenting participants, and collecting data on over 200 African immigrant adults. Based on my clinical experience on the poor cancer outcomes of African immigrant women in comparison to African Americans and other immigrant populations, I conducted a retrospective, comparative analysis of the cervical cancer screening behaviors of African immigrants, African Americans and Afro-Caribbean immigrants using the 2010-2014 National Health Interview Surveys. The results showed low prevalence of cervical cancer screening among African immigrant women in comparison to African Americans. My study contributes to the literature on African immigrant health, informs the need to address the cervical cancer behaviors of African immigrants, as well as contribute to the knowledge of the importance of disaggregating population based data on the cancer screening behaviors of individuals of African descent.

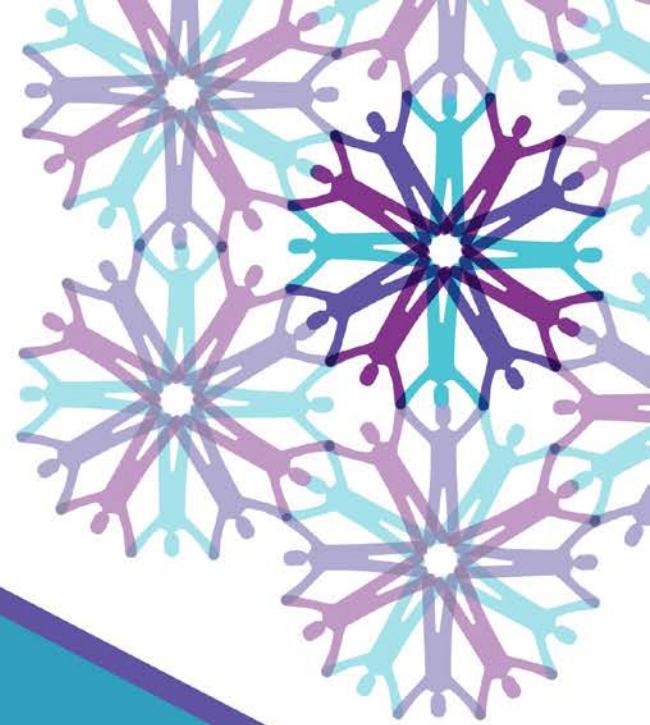
Publication and Presentations

[REDACTED] The Afro-Cardiac Study: Cardiovascular Disease Risk and Acculturation in West African Immigrants in the United States: Rationale and Study Design. J Immigr Minor Health. 2016 Dec;18(6):1301-1308. PubMed PMID: [26429573](https://pubmed.ncbi.nlm.nih.gov/26429573/).

[REDACTED] A comparative analysis of cervical cancer screening in African immigrant, African-American and Afro-Caribbean women in the 2010-2014 National Health Interview Surveys. United States Conference on African Immigrant & Refugee Health; 2016 September; Queens, New York, USA.

[REDACTED] The afro-cardiac study: identifies high burden of cardiovascular disease risk in West African immigrants in the United States. American Heart Association Epi|Lifestyle; 2015 March; Baltimore, MD, USA.

Research Support and/or Scholastic Performance



NIH Biographical Sketch: Research Support and/or Scholastic Performance

- In general, fellowship applicants should only complete the “Scholastic Performance” section
- List by institution and year for all undergraduate and graduate courses
- Explain any grading system used if it differs from a 1–100 scale; an A, B, C, D, F system; or a 0–4.0 scale
- Also indicate levels required for a passing grade

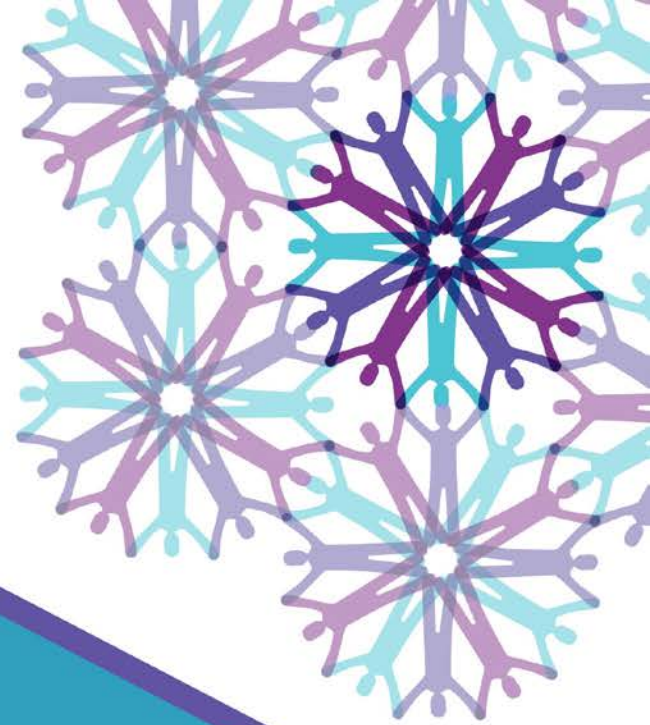
Sample Scholastic Performance

D. Additional Information: Research Support and/or Scholastic Performance

Scholastic Performance

YEAR	COURSE TITLE	GRADE
SWARTHMORE COLLEGE		
2010	Introduction to Cognitive Science	A
2010	Biological Chemistry	B
2011	Anthropology of Childhood and the Family	A
2011	Disease, Culture, and Society in the Modern World	A
2011	Human Genetics	A
2011	Senior Project	A
2011	Bioinformatics	B
2012	Cell Biology	A
2012	Physics in Modern Medicine	A
2012	Genomics and Systems Biology	A
2012	Senior Project	A
UC SAN DIEGO		
2012	Seminar in Genetics	P
2013	Statistics for the Life Sciences	P
2013	Ethics in Biological Research	CRE
2014	Seminar in Physiology and Behavior	P

Except for the scientific ethics course, UC San Diego graduate courses are graded P (pass) or F (fail). Passing is C plus or better. The scientific ethics course is graded CRE (credit) or NC (no credit). Students must attend at least seven of the eight presentation/discussion sessions for credit.



Biosketch Tips

The Big Picture

- The biosketch tells reviewers why you should be funded
 - Showcases your education and experience
 - Links your experience to the proposed project
 - Places your contribution to science within a historical background
 - Describes the role you played in making a contribution
- Tell your story
 - What is the big problem you're trying to solve or question you're trying to answer?
 - How does your training put you in the position to do the research?
- Market yourself...but do not oversell yourself
 - Your publications, training, and experience must support your claims
- Be concise, but cover all the bases

Be Compliant

- All biosketches **must be formatted** per the instructions, or NIH may *withdraw* your application from consideration
- Include no more than 5 contributions to science with no more than 4 citations per contribution
- If you include the optional link to a full list of your published work, ensure that the URL is to a Federal Government (.gov) website
- Refrain from including information, such as preliminary data, that belongs elsewhere in the application
- Follow NIH guidance on font type, font size, and margins
- Limit the length of your biosketch to 5 pages or less
- Use PDF format for your biosketch attachment

Resources

- Current (FORMS-D) application forms:
 - <http://grants.nih.gov/grants/how-to-apply-application-guide.htm>
 - You must use the correct forms to be eligible for funding consideration
- NIH Biographical Sketch form, instructions, and samples:
 - <http://grants.nih.gov/grants/forms/biosketch.htm>
- SciENCv (Science Experts Network Curriculum Vitae):
 - <http://www.ncbi.nlm.nih.gov/sciencv/>
- NCBI My Bibliography:
 - <http://www.ncbi.nlm.nih.gov/books/NBK53595/>



**NATIONAL
CANCER
INSTITUTE**

cancer.gov/crchd